

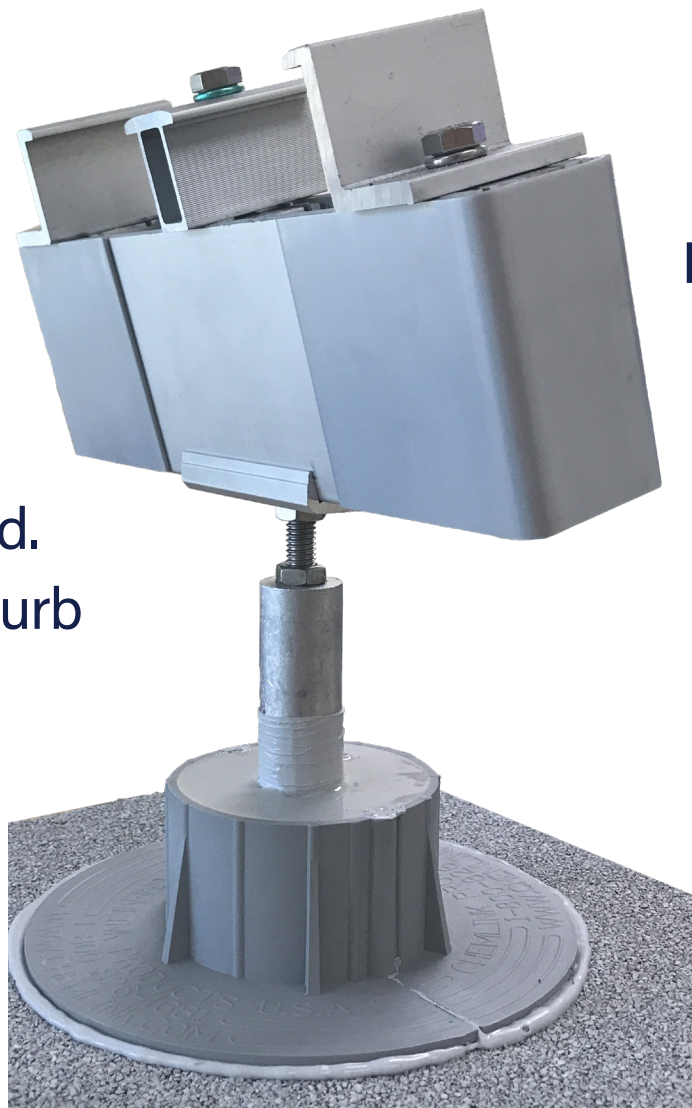
# SolarWedge

SolarWedge® tilted racking system for flat (low-slope) roofs is available in 1°, 5°, 10°, or 15° tilt angles. It is Class A fire-rated for Type 1 and Type 2 modules with no height restrictions. Use with ProSolar's patented UL2703 self-bonding RoofTrac® rail and clamp technology for a simple, low cost, and reliable design.

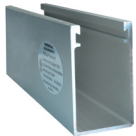
**Features**  
**UL2703**  
**Self-Bonding**  
**RoofTrac® Rail**  
**and Clamp**  
**Technology\***

**Available in**  
**1°, 5°, 10°,**  
**and 15° tilt**  
**angles**

- Low Cost.
- Easy to Install.
- Fully Engineered.
- Class A Fire Rated.
- ChemLink 3" E-Curb Compatible.



\*No Weeps/bonding  
clips needed



## 2-1/2" (Deep) Rail

72" Max Span

45 lbs/ft<sup>2</sup> Test Load

125 mph Equivalent Wind Speed



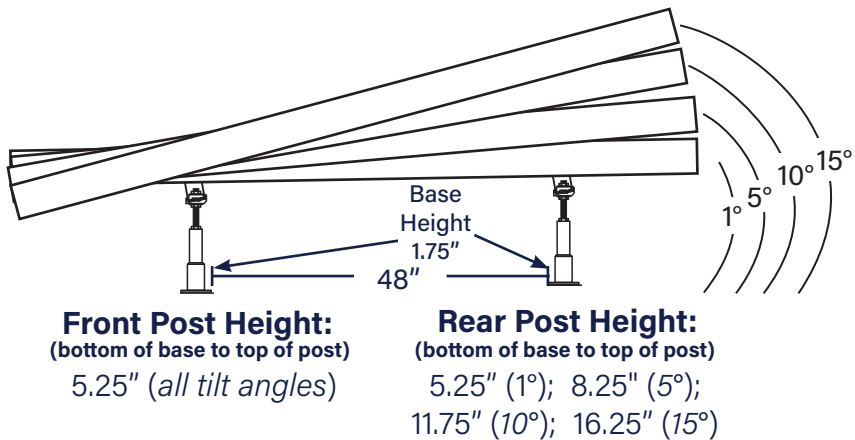
## 3" (Deep) Rail

96" Max Span

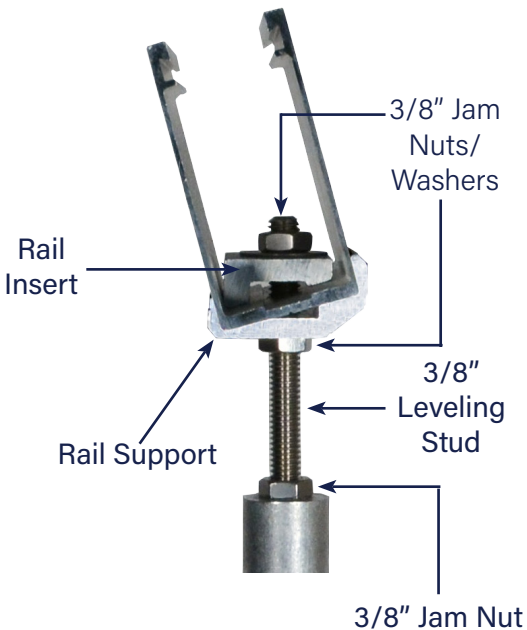
30 lbs/ft<sup>2</sup> Test Load

110 mph Equivalent Wind Speed

### Side View



Commercial FastJacks® used for additional roof clearance



### Parts List

(6 Front and Rear Post Pairs Per Box)

1" Diameter Short Front Post (6)



1" Diameter Tall Rear Post (6)

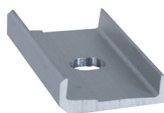


1-1/2" Diameter (1-3/4" Tall) Bases\* (12)

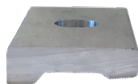


\*Base Compatible with 2" Tall, 3" Diameter ChemLink E-Curb

Rail Support (12)



Rail Insert (12)



3" x 3" Optional Aluminum Seal Plates (12)



3/8" SS Narrow OD Flat Washers (12)



3/8" SS Jam Nuts (36)



3/8" SS Flat Washers (24)



3/8" x 4" SS Leveling Studs (12)

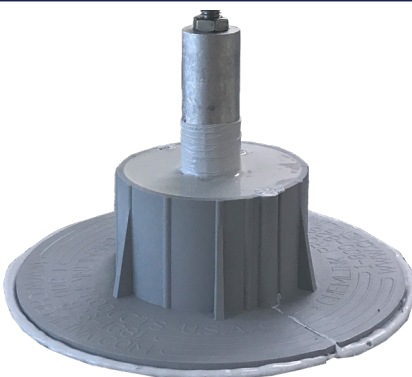


### Featuring: SolarWedge® Rail Lock



For locking rails in place during marking and hole drilling process

**see video:** [prosolar.com/videos](http://prosolar.com/videos)



**New!** Lower-profile SolarWedge® Base compatible with ChemLink E-Curb  
**For use with:** Granulated Modified Bitumen, Asphalt and Coal Tar BUR, PVC, EPDM, PIB, and TPO Roofing