

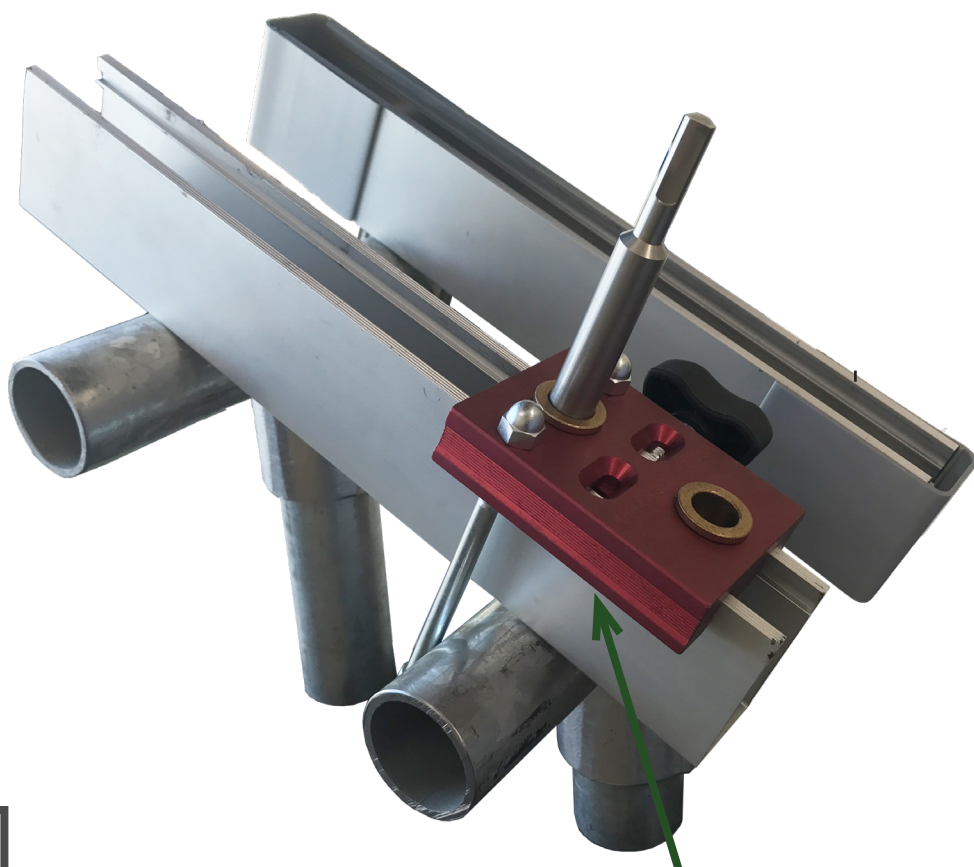
GroundTrac®

ProSolar®'s GroundTrac® system is a high-strength, easy to install ground mount for residential and light commercial projects. Its time-proven, patented design works directly with ProSolar®'s RoofTrac® Rail and Clamp Technology. Designed for 1-1/2" Schedule #40 galvanized water pipe to make for an easy-to-source, sleek ground mount solution.

Features UL2703 Self-Bonding RoofTrac® Rail and Clamp Technology*

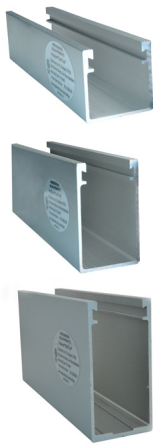
- Low cost
- Easy to install
- Pre-engineered
- Time-proven design
- No cross-bracing required
- Used for kW and multi MW projects

See Install Video:
prosolar.com/videos



GroundTrac® EZ Drill Guide & Drill Bit Tools

*No Weebs/bonding clips needed



124" Deep (2-1/2") Rail

3 Modules

10' Lateral Span

84" On Center

136" Deep (2-1/2") Rail

4 Modules

10' Lateral Span

84" On Center

164" Extra-Deep (3") Rail

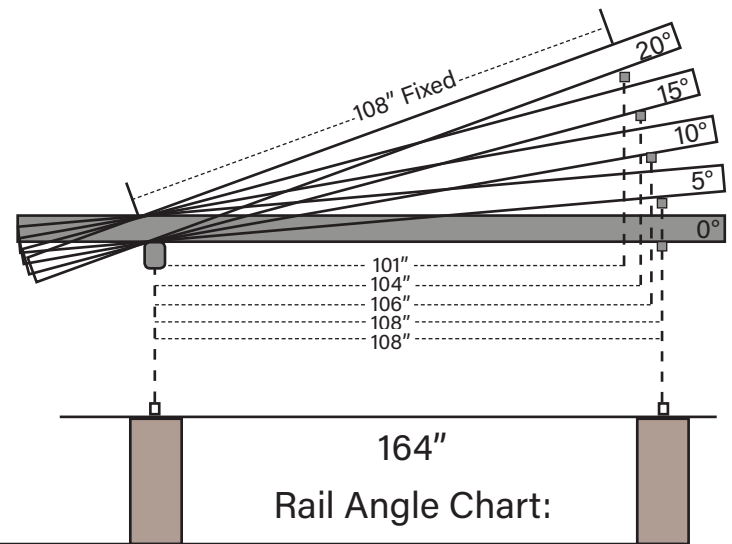
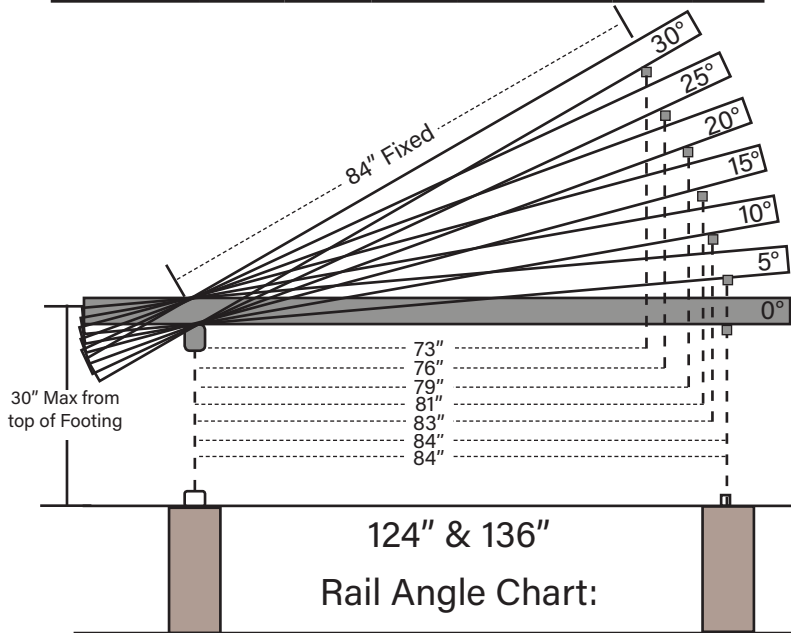
4 Modules

8' Lateral Span

108" On Center

Angle	0°	5°	10°	15	20°	25°	30°
Footing Distance	84"	84"	83"	81"	79"	76"	73"

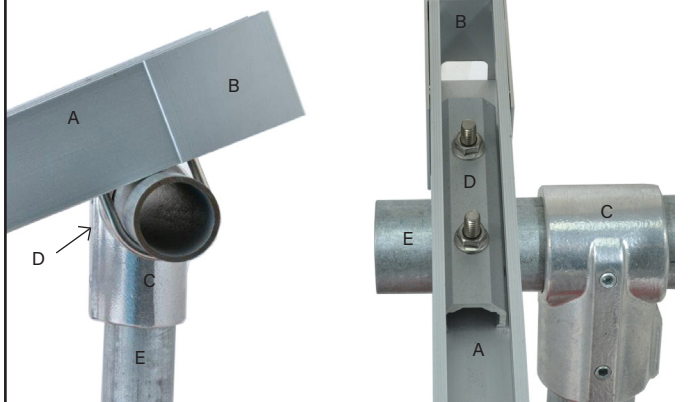
Angle	0°	5°	10°	15	20°
Footing Distance	108"	108"	106"	104"	101"



Components

Side View

Top View



A. XD (3") Rail
B. XD Rail End Cap
C. Hollaender Tee

D. U-Bolt Assembly
E. 1-1/2" Schedule
#40 Galvanized
Water Pipe

124" x 2-1/2" Rail:

- Supports up to (3) 39.5" Wide Modules
- 84" On Center



136" x 2-1/2" Rail:

- Supports up to (4) 32.5" Wide Modules
- 84" On Center



164" x 3" Rail:

- Supports up to (4) 39.5" Wide Modules
- 108" On Center



*Specifications subject to change. Consult your local AHJ for site-specific regulations

(172" x 3" rail also available for modules > 39.5" wide)